



Panel One Integrated Load Center



- Combines up to Five Panels into a single Panel One
- Requires Less Mounting Space
- UL 1008 Listed
- Walking Beam Mechanically Interlocked Transfer Switch
- Multiple Load Center Options
- Made in the U.S.A.

Panel One integrates Electric Equipment & Engineering Co.'s innovative designs and switch technology with a wide array of options to meet and exceed our customers equipment needs. Panel One combines up to five different pieces of equipment into one panel for maximum integration and savings. Panel One can include a transfer switch, load center, generator connection, TVSS and can be main disconnect in one clean package.

Panel One requires less mounting space to maximize equipment space in cabinets, buildings, and shelters; improves power protection; and reduces installation time and costs by removing excess conduit runs and wiring. Panel One comes in a variety of voltage and current ratings. It can be configured with different options, including 12-42 circuit load centers, indoor and outdoor enclosures, a wide array of TVSS options, and color coded Cam-Type connectors for safe and clear generator connection.

The Panel One Integrated Load Center is UL 1008 Listed and meets code requirements in the U.S. for service entrance equipment. Panel One is also equipped with a walking beam mechanical interlock that prevents both transfer switch elements from being closed simultaneously.

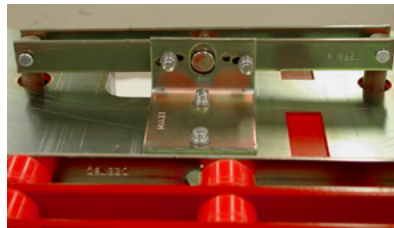
Features

- Panel One is a UL Listed product line
- UL 1008 Listed Manual Transfer Switch
- 100-200 Ampere Ratings Available
- Available in Single Phase and Three Phase variations Panel One includes molded case circuit breakers with inherent arc quenching, overload, and instantaneous trip features
- Fully Integrated 12-40 Circuit Square Load Center
- Copper Load Bus connects Transfer Switch to Load Center
- Type 1 Rated Indoor Enclosure
- Highest Quality and Most Reliable Integrated Load
- Center Product Available
- Manufactured and Assembled in the U.S.A.



Optional Features

- Outdoor 3R Rated Enclosure
- Field Upgradeable to Automatic Transfer Switch
- Fully Integrated TVSS (Transient Voltage Surge Suppressor)
- Fully Integrated Cam-Type Connectors for Generator
- Connection (Color Coded)
- AC Fail and other alarms available
- Fully Integrated GFI Receptacles



Contact Mike Morrioni—
mike.morrioni@eeeusa.com
or see us at www.eeeusa.com



Corporate Headquarters

Electric Equipment & Engineering Co.
40 West 49th Avenue
Denver, CO 80216

Phone: (303) 296-1476
Fax: (303) 296-1478