

Battery Disconnect Breakers – E3MJB/Molded Case Switches – E3MJS1200

1200A Frame

Ordering Information

Complete Assembled Breaker/Switch

A complete factory assembled 1200A disconnect includes the frame, trip unit (if breaker), battery side and load connector bus, all factory assembled and shipped as a complete unit.

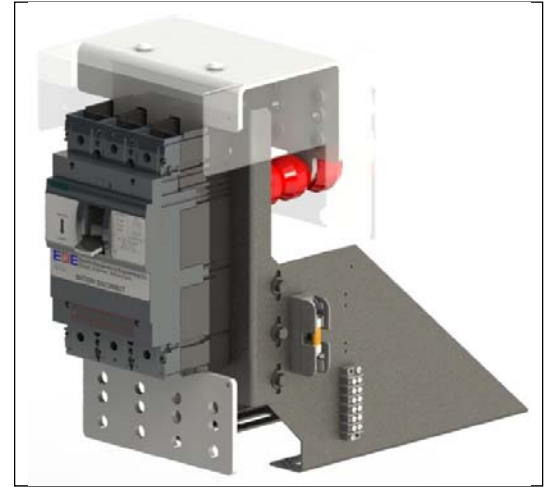
One dry Form-C Aux contact

Battery mounting hardware is included with each disconnect.

For DC applications, use thermal magnetic trip unit only.

Breakers are suitable for reverse feed applications.

This disconnect assumes one side of the battery is grounded. The disconnect will switch the ungrounded polarity.



Interrupting Ratings

Disconnect Type UL 489, 489A	DC Amperes (KA)	
	80	250
Breaker	50	30
Switch	50	30

Dimensions, inches – Base Unit

Disconnect Type	Width	Height	Depth
Standard Vertical	9-1/2"	17"	19"

Total height above battery rack dependent on application

Connectors for 75°C Wire

Bus Construction	Ampere Rating	Wire Landings	No. of cables per connector plate	Part Number
1/4" Copper Tin Plated	800-1200	2-hole lugs on 1" and 1-3/4" centers ①	4	4249A

① Lugs will terminate with 3/8" bolts

Shipping Weight, lbs.

Frame	Complete Assembly
1200	75 lbs *

* Includes typical battery mounting structure

Thermal-Magnetic - Instantaneous Trip Adjustment Range

Trip Unit Continuous Amp Rating (I _n)	Instantaneous Overcurrent Setting (I _i)	
	Min.	Max.
800	4000	8000
900	4500	9000
1050	5250	9000
1200	6000	12,000
Molded Case Switch	—	18,000

Note: Each breaker has 6 trip settings in this range.

DC ratings 0-40% above listed rating.

Lug Landing Detail

